

Lussazione Chirurgica dell'Anca sec. Ganz



ORTHOPEDIALAB

AREZZO • 12 -13 SETTEMBRE 2011
NICOLA'S FOUNDATION ONLUS
RESEARCH & TEACHING CENTER

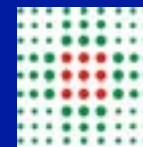
PROGRAMMA PRELIMINARE

Ettore Sabetta

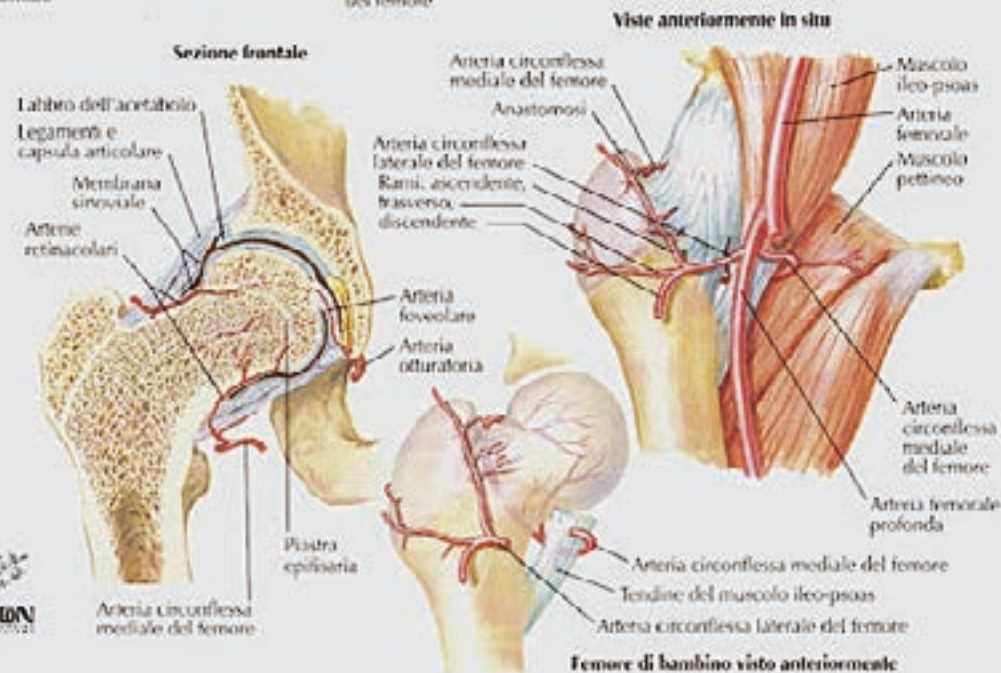
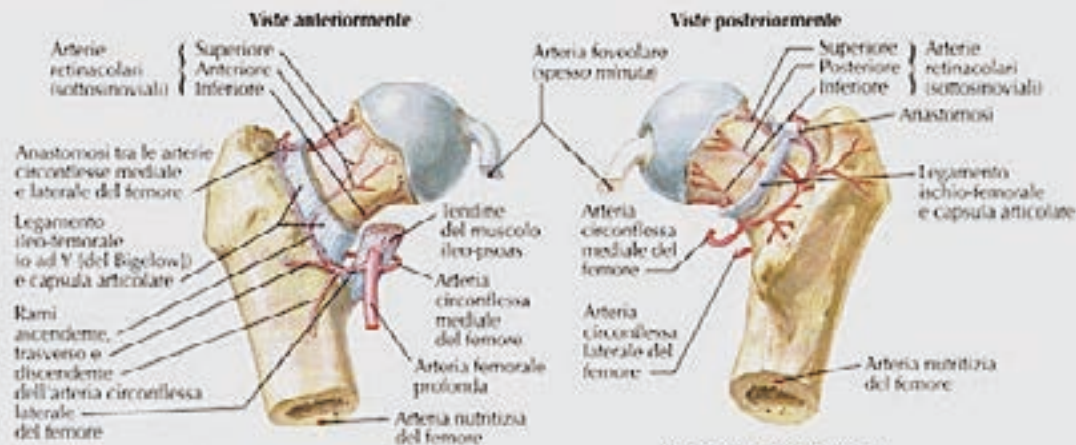
*Arcispedale S. Maria Nuova
Reggio Emilia*

*Struttura Complessa
Ortopedia e Traumatologia*

Direttore: Ettore Sabetta



SERVIZIO SANITARIO REGIONALE
EMILIA-ROMAGNA
Azienda Ospedaliera di Reggio Emilia



F. Neri
IDN 00021

Letture consigliate

L'arteria circonflessa femorale mediale

Decorso topografico, anastomosi

dalla Klinik für Orthopädische Chirurgie
Universität Bern

Direttore: Prof. Dr. med. R. Ganz

Lavoro eseguito sotto la direzione del Dr. med. E. Gautier

Preparazione: Laboratoire d'Anatomie, Faculté de Médecine e Ecole de Chirurgie,
Université de Paris.

L'arteria circonflessa femorale mediale

Decorso topografico Anastomosi

Dissertazione Inaugurale

Per il conseguimento del dottorato in medicina
della Facoltà di Medicina dell'Università di Berna

Presentato da

Ganz Katharina, Germania

Krügel Natalie, Escholzmatt, Lucerna

Letture consigliate

Volume 24 - Numero 3 - Dicembre 2010

LO SCALPELLO

OTODI Educational

Rivista Ufficiale degli Ortopedici
Traumatologi Ospedalieri d'Italia


Direttori Scientifici
N. Pace
M. Randelli

La chirurgia conservativa dell'anca

L. Turchetto

- » **Editoriale**
a cura di L. Turchetto
- » **Eziologia e meccanismi patologici dell'osteoartrite dell'anca**
- » **Valutazione clinica nella coxalgia dell'adulto**
- » **Impingement femoro-acetabolare (FAI) e sport**
- » **L'imaging del conflitto femoro-acetabolare**
- » **Anatomia vascolare**
- » **Indicazioni e tecnica del trattamento in chirurgia aperta dell'impingement femoro-acetabolare**
- » **Epifisiolisi**
- » **Le osteotomie periacetabolari e prossimali del femore**
- » **L'artroscopia dell'anca**
- » **Ibandronato e impianti protesici non cementati d'anca: valutazione densitometrica della massa ossea periprotetica e nuovo approccio terapeutico nella prevenzione della mobilizzazione asettica**
- » **Consenso intersocietario sulla profilassi antitrombotica in chirurgia protesica dell'anca e del ginocchio e nelle fratture del collo femorale**

Available
online
www.springerlink.com

 Springer

Sommario

Volume 24 - Numero 3 - Dicembre 2010

La chirurgia
conservativa dell'anca

- Editoriale**
a cura di L. Turchetto
137
- Eziologia e meccanismi patologici dell'osteoartrite dell'anca**
R. Ganz, M. Leunig
139
- Valutazione clinica nella coxalgia dell'adulto**
142
A. Capone, D. Piodda, F. Ennas
- Impingement femoro-acetabolare (FAI) e sport**
149
F. Benazzo, G. Zanon, M. Marullo
- L'imaging del conflitto femoro-acetabolare**
155
E. Gallo, M. Gallo, A. Campacci
- Anatomia vascolare**
163
G. Grappiolo
- Indicazioni e tecnica del trattamento in chirurgia aperta dell'impingement femoro-acetabolare**
168
R. Ganz, L. Turchetto, M. Leunig
- Epifisiolisi**
177
A. Massà, A. Aprato, M. Favuto, F. Alzori, A. Nicodemo, G. Governale
- Le osteotomie periacetabolari e prossimali del femore**
184
L. Turchetto, A. Barbuio, M. Monesi
- L'artroscopia dell'anca**
190
E. Sabetta, C. Ferrai
- Ibandronato e impianti protesici non cementati d'anca: valutazione densitometrica della massa ossea periprotetica e nuovo approccio terapeutico nella prevenzione della mobilizzazione asettica**
198
M. Muratore, E. Quarta, L. Quarta, F. Calcagnin, A. Grimaldi, M.A. Orgiani, A. Marsilio, G. Rollo
- Consenso intersocietario sulla profilassi antitrombotica in chirurgia protesica dell'anca e del ginocchio e nelle fratture del collo femorale**
206
F. Biggi, F. Randelli, G. Della Rocca, D. Imberti, P. Grossi, R. Landolfi, G. Palareti, D. Proco



Gruppo Italiano di Chirurgia Conservativa dell'Anca

Soci Fondatori

- [Reinhold Ganz](#), Bema [CH]
- [Francesco Maria Benazzo](#), Pavia
- [Antonio Campacci](#), Negrar (VR)
- [Antonio Capone](#), Cagliari
- [Guido Grappiolo](#), Pietra Ligure (SV)
- [Michael Leunig](#), Zurigo [CH]
- [Alessandro Massé](#), Orbassano (TO)
- [Mauro Monesi](#), Cesena
- [Ettore Sabetta](#), Reggio Emilia
- [Luigino Turchetto](#), Portogruaro (VE)

Seleziona un nome, oppure visualizza la [mappa geografica](#) dei soci.

© 2008 G.I.C.C.A.
Tutti i diritti riservati

G.I.C.C.A.

Il Gruppo Italiano di Chirurgia Conservativa dell'Anca nasce nel 2007 su iniziativa del Prof. Reinhold Ganz

Sezioni

[Chi Siamo](#)
[Presentazione](#)
[Education](#)
[Contattaci](#)
[Forum G.I.C.C.A.](#)

Link Esterni

[Prof. R. Ganz](#)

J Bone Joint Surg Am. 2009;91:409-18 • doi:10.2106/JBJS.G.01679

Capsular and Pericapsular Contributions to Acetabular and Femoral Head Perfusion

By Morteza Kalhor, MD, Martin Beck, MD, Thomas W. Huff, MD, and Reinhold Ganz, MD

Investigation performed at the Department of Orthopedic Surgery, Iran University of Medical Sciences, and the Department of Anatomy, Legal Medicine Organization, Tehran, Iran

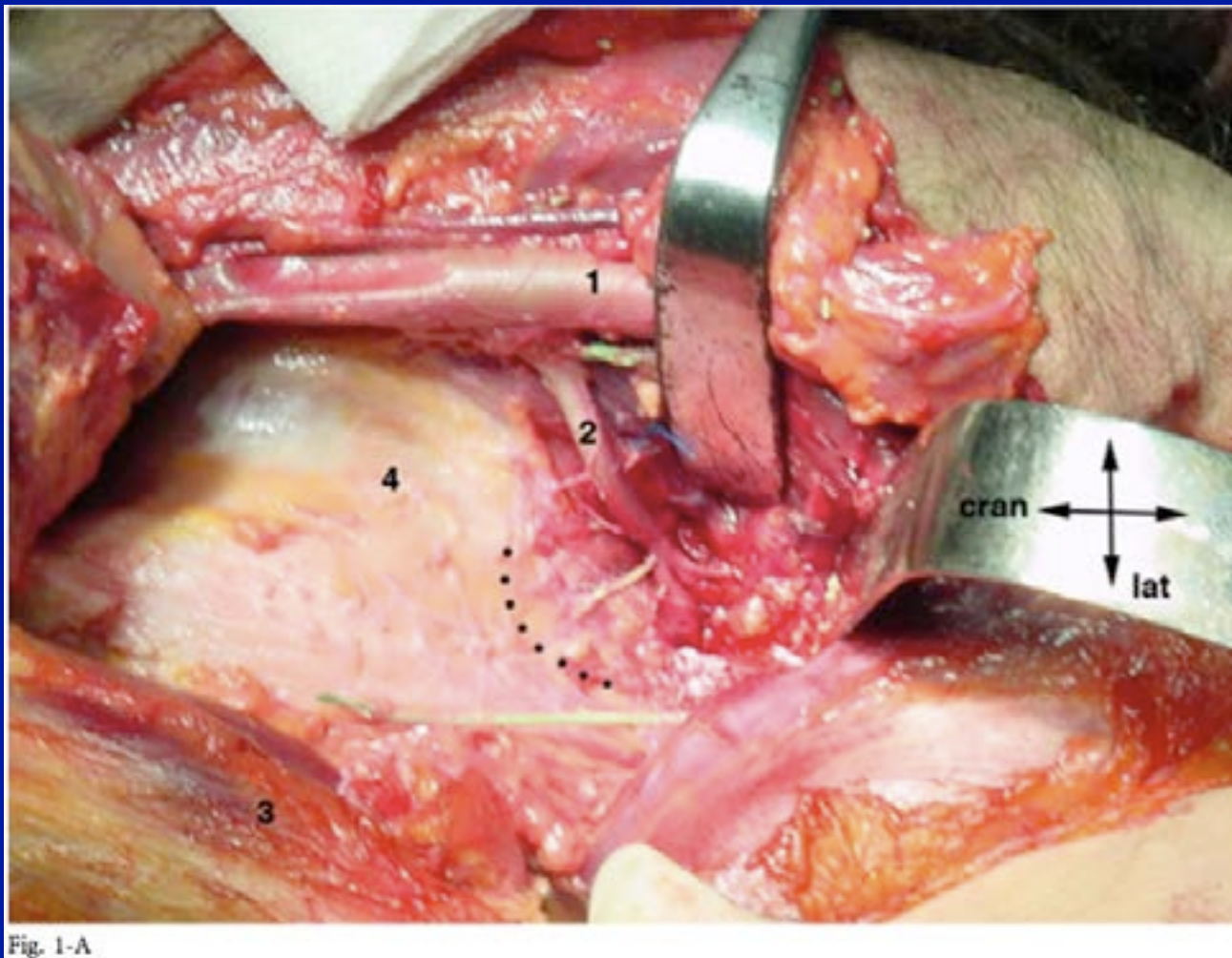


Fig. 1-A Anterior aspect of the left hip after the iliopsoas muscle was reflected up and the rectus femoris down to show the capsular branches of the medial femoral circumflex artery. 1 = femoral artery, 2 = medial femoral circumflex artery, 3 = tensor fasciae latae, and 4 = anterior capsule. cran = cranial, and lat = lateral.

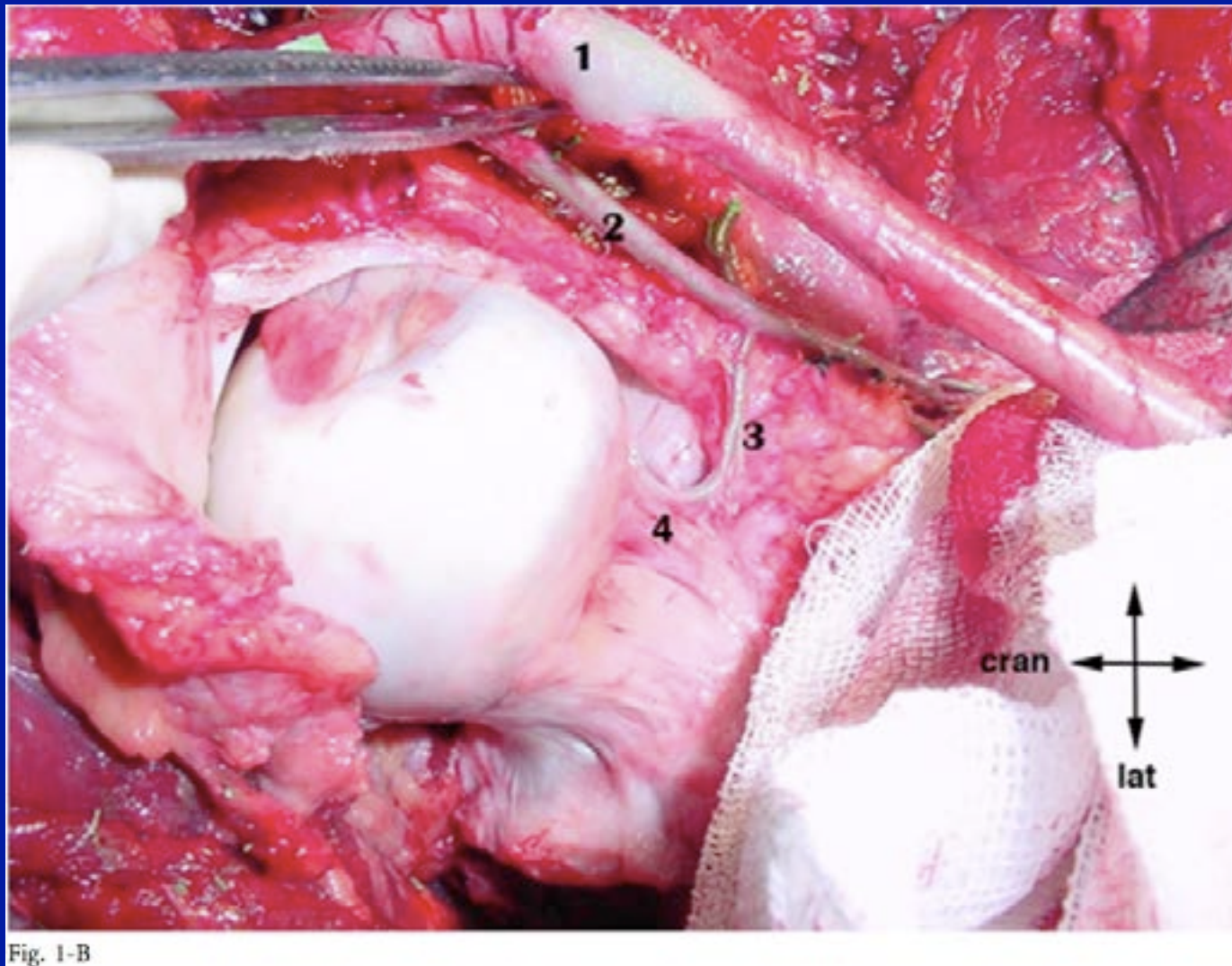
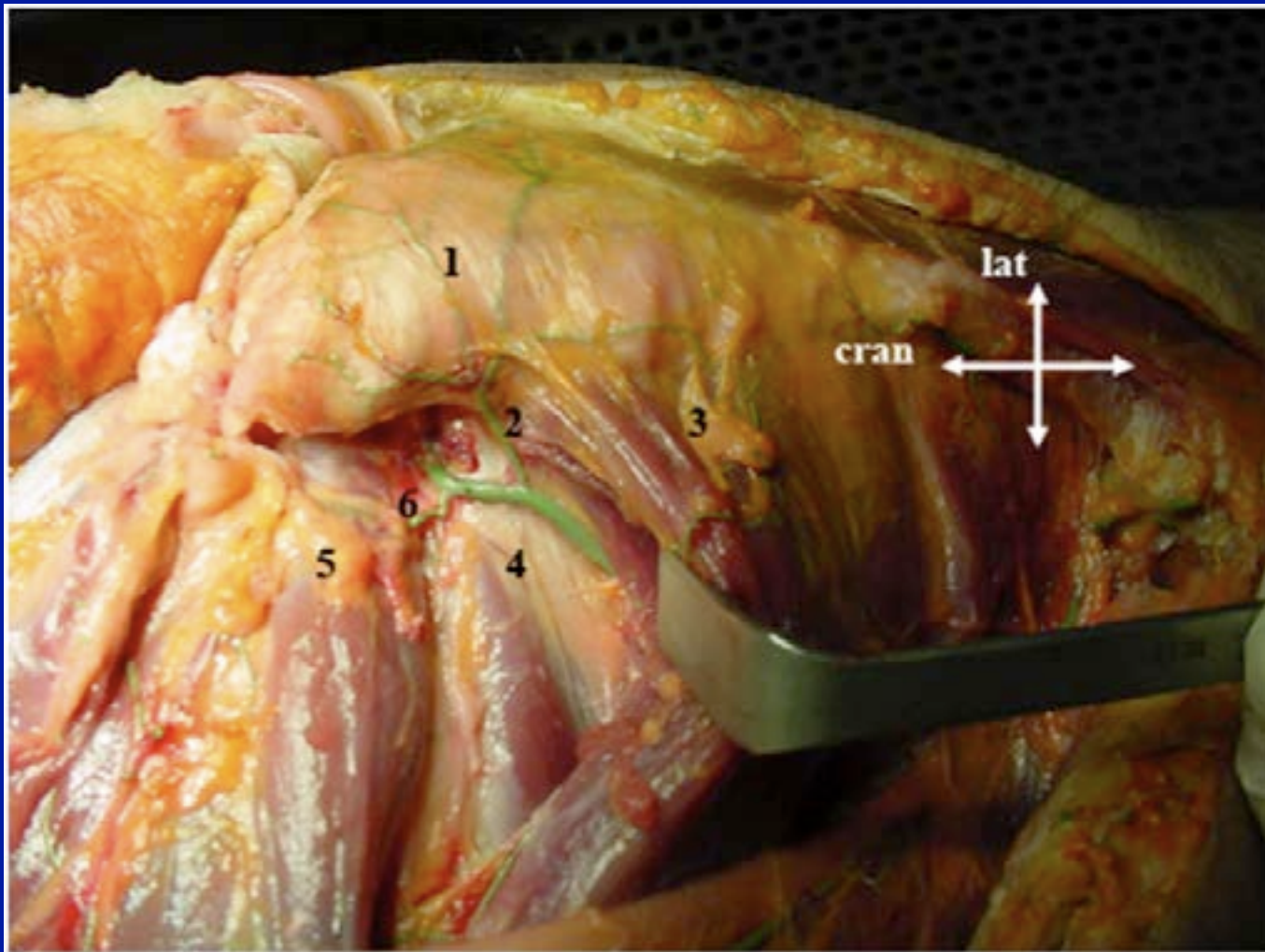


Fig. 1-B

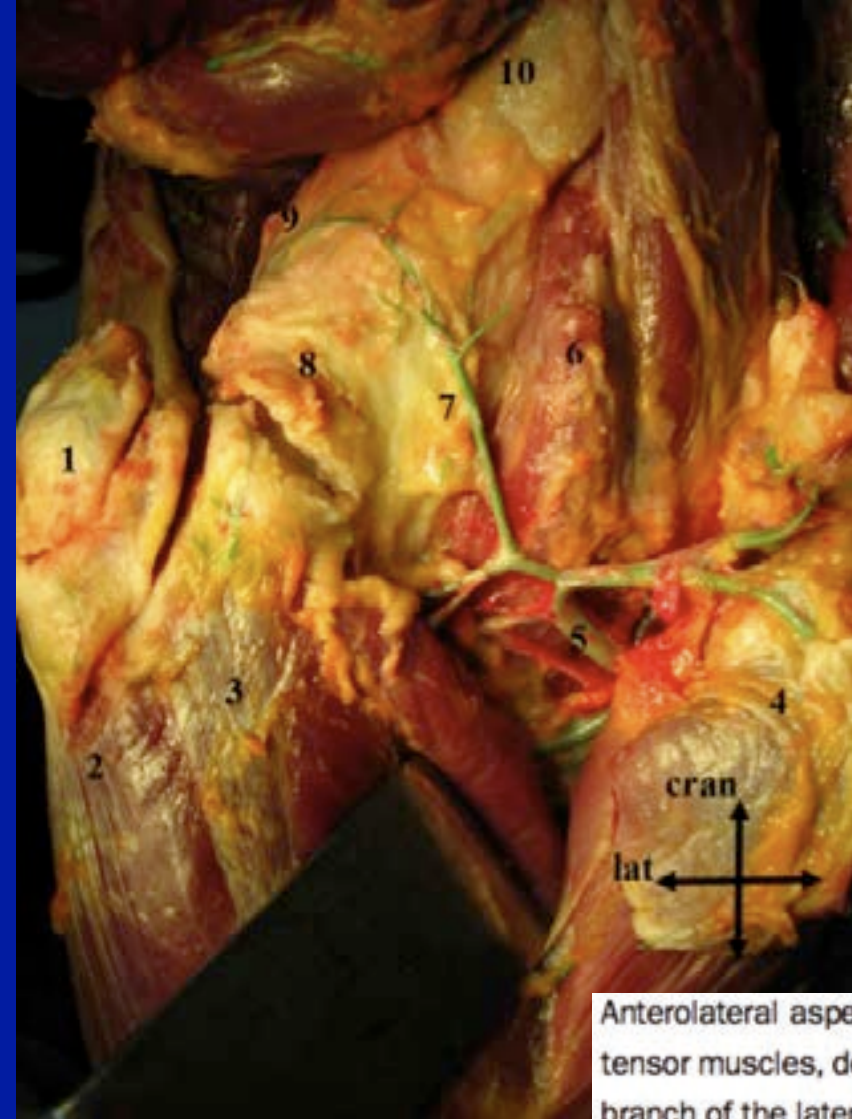
Fig. 1-B Anterior aspect of the right hip after capsulotomy, showing the retinacular artery derived from the medial femoral circumflex artery in the inferomedial aspect of the hip. 1 = femoral artery, 2 = medial femoral circumflex artery, 3 = retinacular branch, and 4 = anterior aspect of the femoral neck. cran = cranial, and lat = lateral.



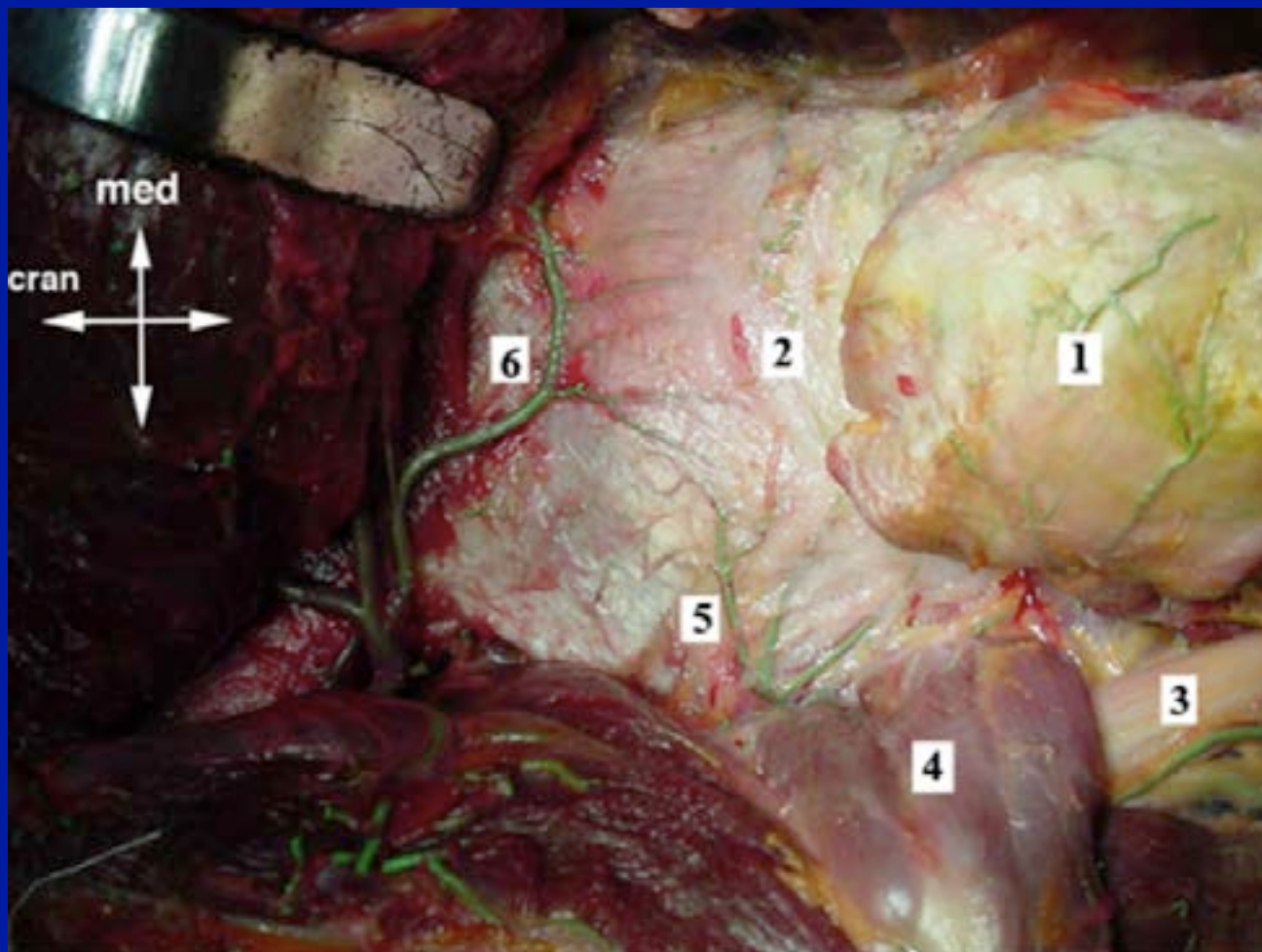
Posterior aspect of the right hip, demonstrating the anatomic position of the deep branch of the medial femoral circumflex artery. 1 = greater trochanter, 2 = trochanteric branch of the medial femoral circumflex artery, 3 = quadratus femoris muscle, 4 = obturator externus muscle, 5 = obturator internus and gemelli muscles, and 6 = anastomotic branch to the inferior gluteal artery. cran = cranial, and lat = lateral.



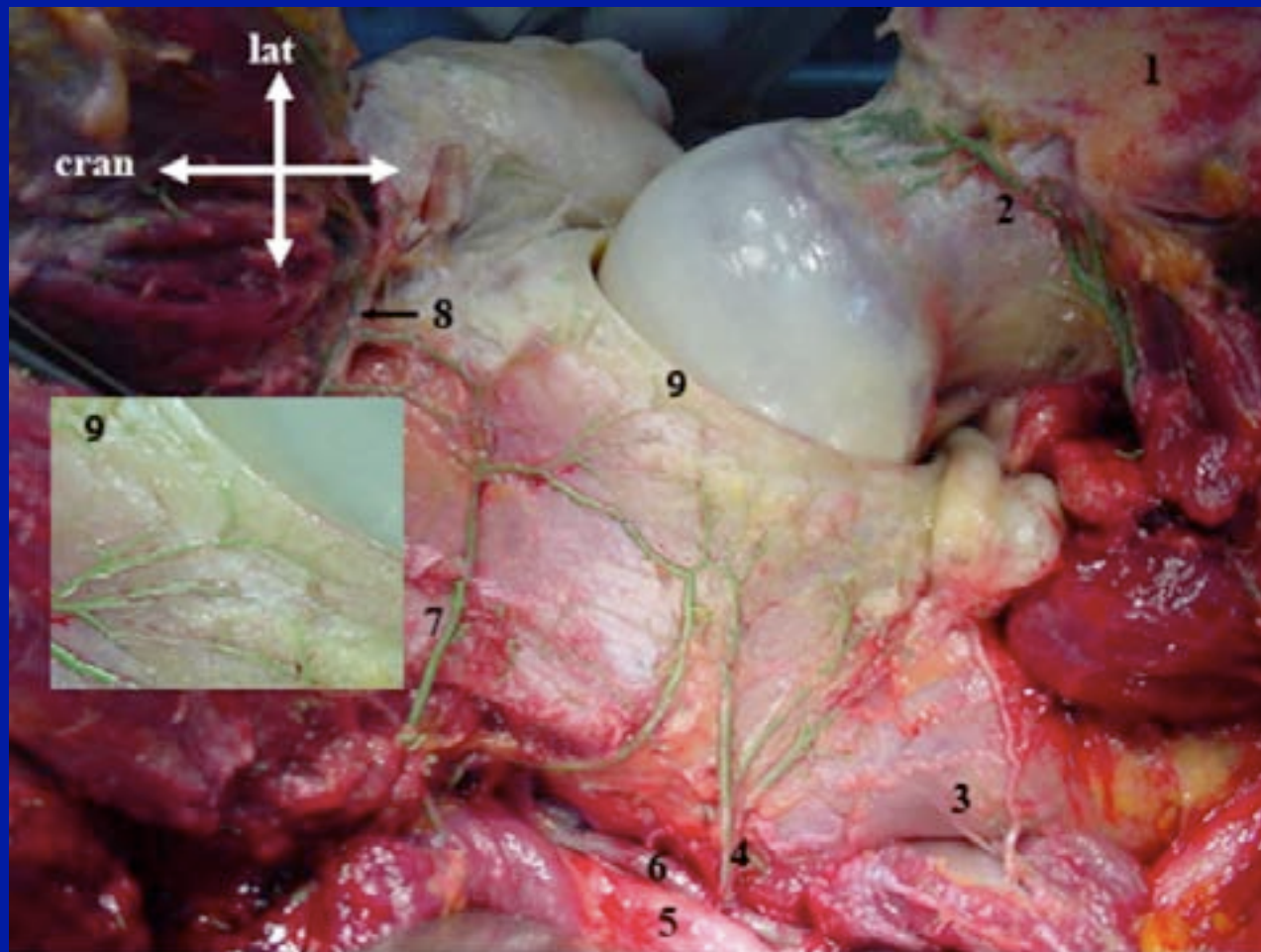
Anterior aspect of the right hip after retraction of the iliopsoas and tensor fasciae latae muscles, showing the joint capsule and the capsular branch of the lateral femoral circumflex artery. 1 = tensor fasciae latae muscle, 2 = iliopsoas muscle, 3 = anterior joint capsule with the rectus muscle turned distally, and 4 = rectus femoris muscle, reflected distally. cran = cranial, and lat = lateral.



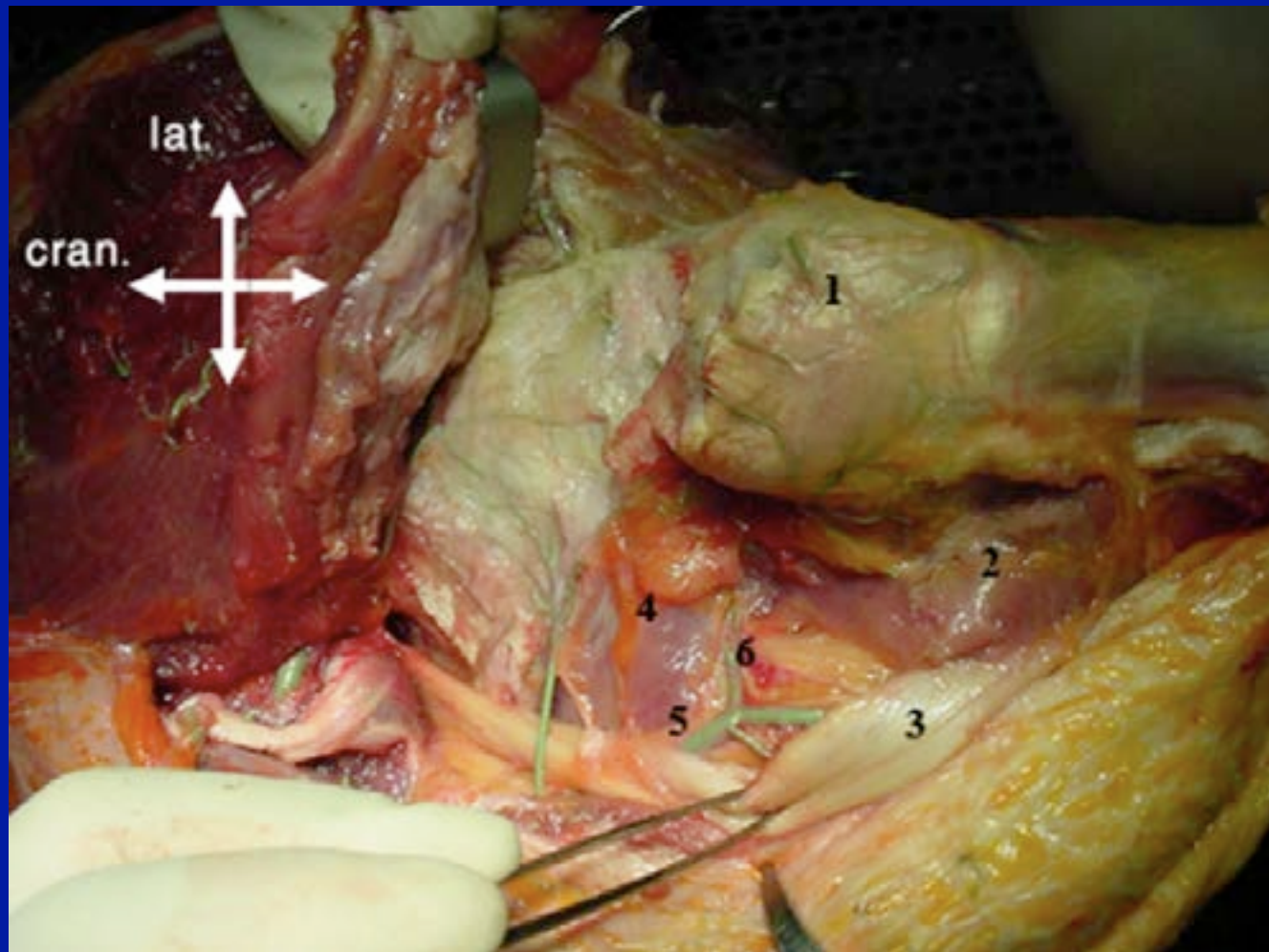
Anterolateral aspect of the right hip after detachment of the abductor, rectus femoris, and tensor muscles, demonstrating a capsular branch and an anastomosis between the ascending branch of the lateral femoral circumflex artery and the supra-acetabular branch of the superior gluteal artery. 1 = greater trochanter, 2 = vastus lateralis muscle, 3 = vastus intermedius muscle, 4 = tensor fasciae latae muscle (turned medially and distally), 5 = lateral femoral circumflex artery, 6 = iliopsoas muscle, 7 = ascending branch of the lateral femoral circumflex artery, 8 = hip joint capsule (femoral attachment), 9 = anterior end of the supra-acetabular branch of the superior gluteal artery anastomosing with the lateral femoral circumflex artery, and 10 = inferior iliac spine (rectus femoris tendon detached). cran = cranial, and lat = lateral.



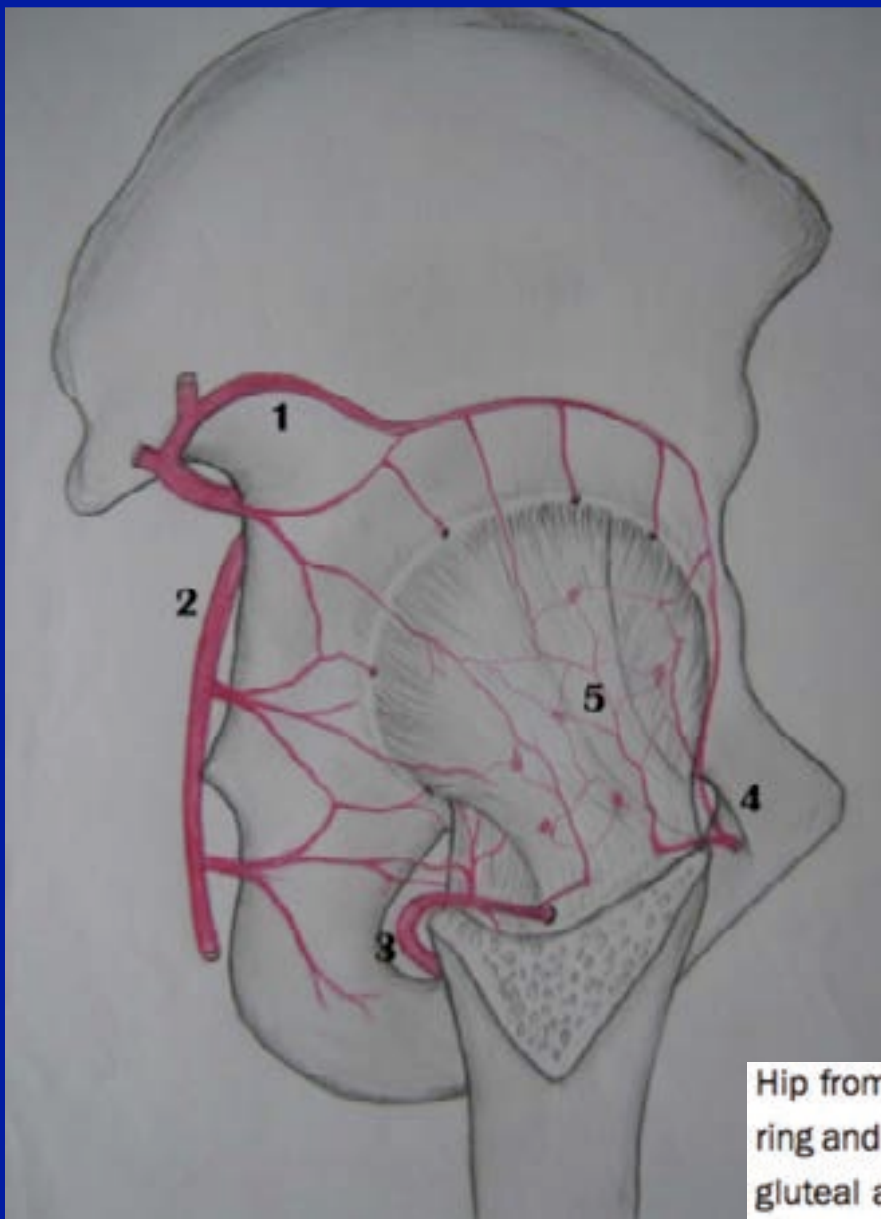
Posterolateral aspect of the right hip after retraction of the gluteal muscles and short external rotators to demonstrate the periosteal arteries as well as the supra-acetabular branch of the superior gluteal artery before capsulotomy. 1 = greater trochanter, 2 = hip capsule, 3 = sciatic nerve, 4 = short external rotators (obturator internus and gemellus muscles) detached from the greater trochanter and retracted, 5 = acetabular branch of the inferior gluteal artery, and 6 = supra-acetabular branch of the superior gluteal artery. cran = cranial, and med = medial.



Posterior aspect of the acetabulum and the hip joint after capsulotomy to show the acetabular branches of the gluteal arteries and anastomoses between them. 1 = greater trochanter (osteotomized), 2 = deep branch of the medial femoral circumflex artery (intra-capsular part and retinacular arteries), 3 = lesser sciatic notch, 4 = acetabular branch of the inferior gluteal artery, 5 = sciatic nerve, 6 = inferior gluteal artery, 7 = acetabular branch of the superior gluteal artery, 8 = supra-acetabular branch of the superior gluteal artery, and 9 = terminal vessel supplying the labrum. cran = cranial, and lat = lateral.

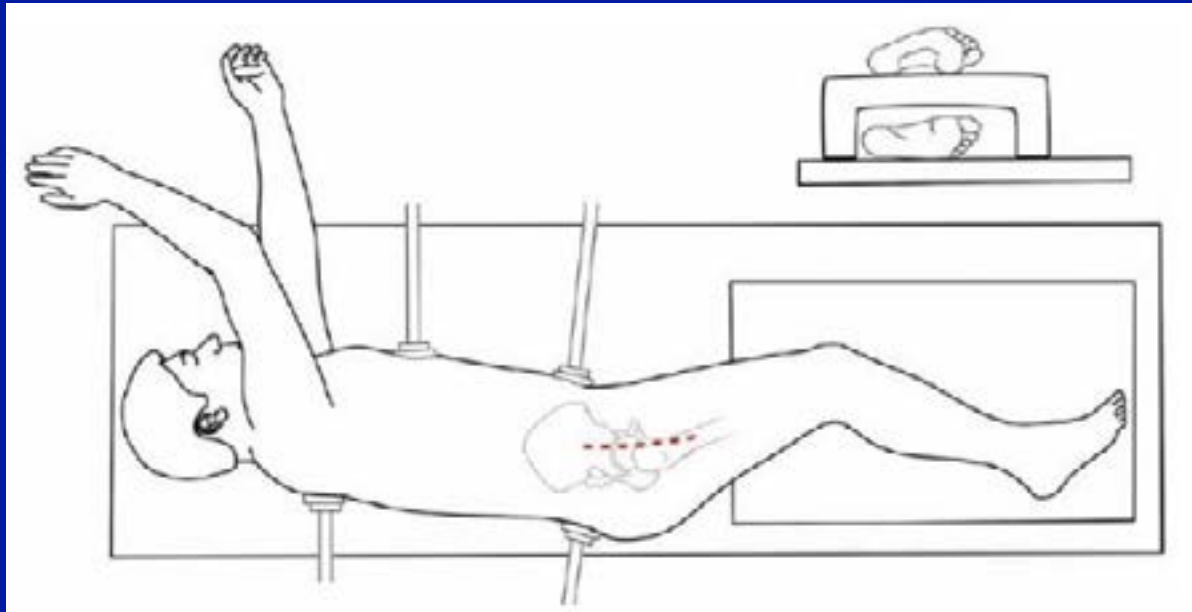


Posterior aspect of the right hip, demonstrating the distal branch of the inferior gluteal artery to the acetabulum and hip capsule. 1 = greater trochanter, 2 = quadratus femoris muscle, 3 = sciatic nerve, 4 = inferior gemellus muscle, 5 = inferior gluteal artery, and 6 = branch of the inferior gluteal artery to the hip capsule and acetabulum. cran = cranial, and lat = lateral.



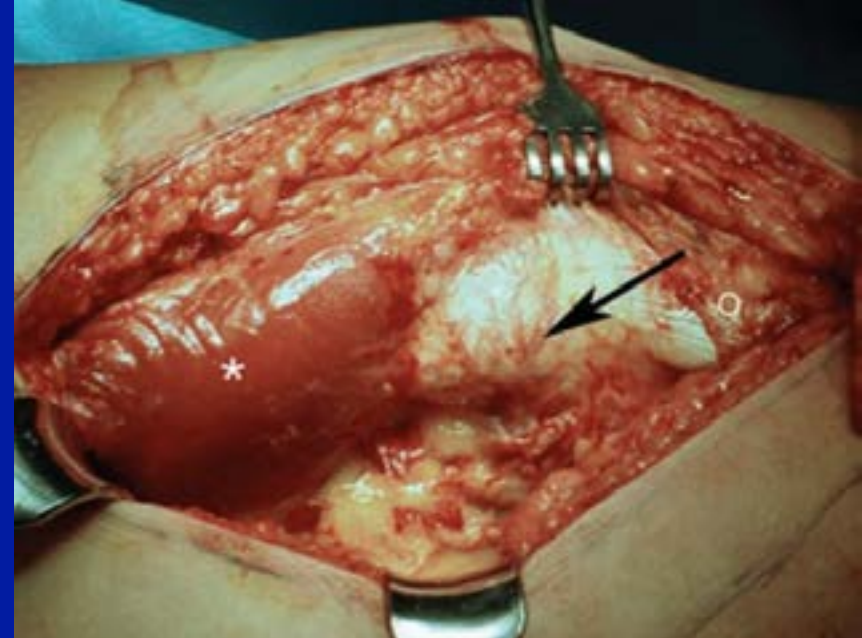
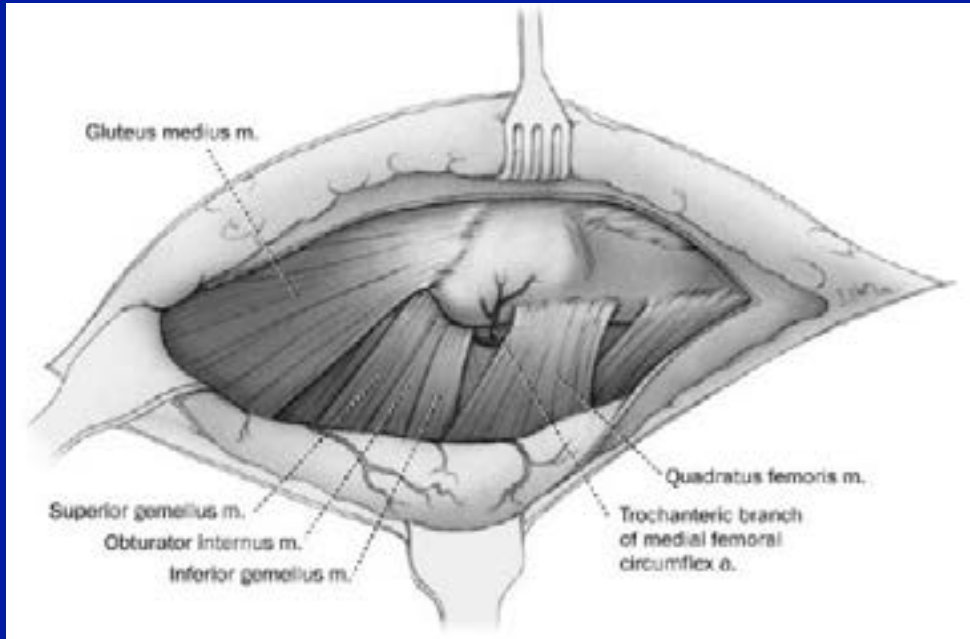
Hip from the posterior view, demonstrating the periacetabular vascular ring and anastomoses between distal and proximal vessels. 1 = superior gluteal artery, 2 = inferior gluteal artery, 3 = medial femoral circumflex artery, 4 = lateral femoral circumflex artery, and 5 = perforating vessels (cut surface).

LUSSAZIONE CHIRURGICA DELL'ANCA



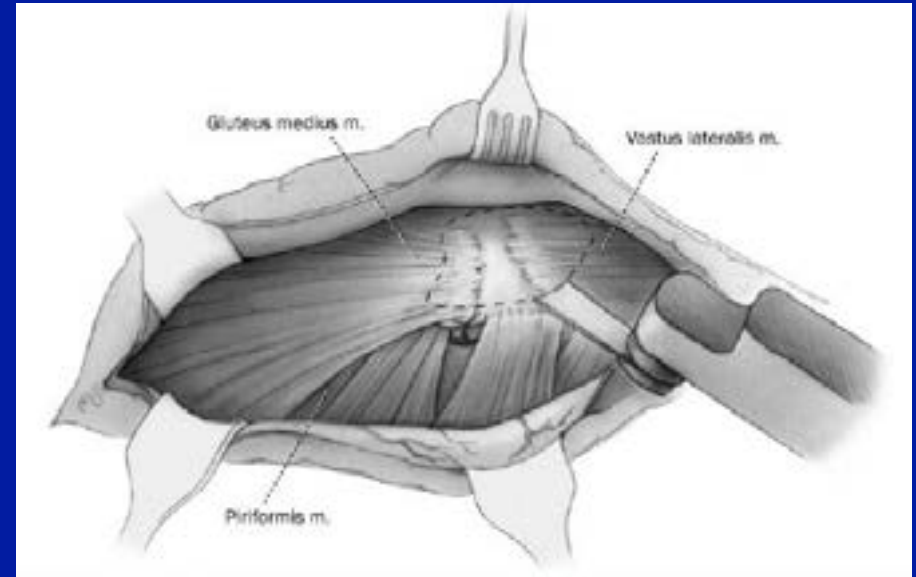
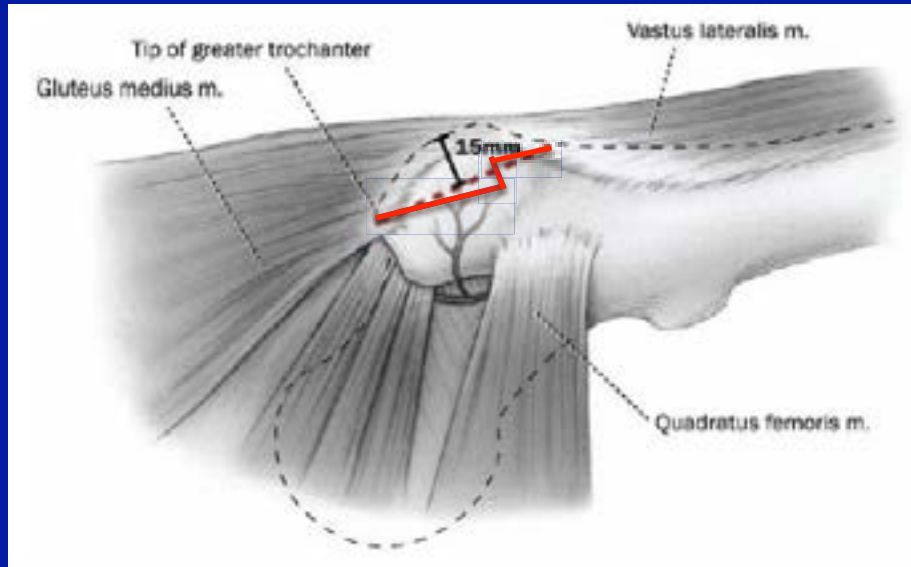
Treatment of femoro-acetabular impingement: preliminary results of labral refixation. Surgical technique. N. Espinosa, M. Beck, DA. Rothenfluh, R. Ganz, M. Leunig. JBJS Am 2007; 89:36-53

LUSSAZIONE CHIRURGICA DELL'ANCA



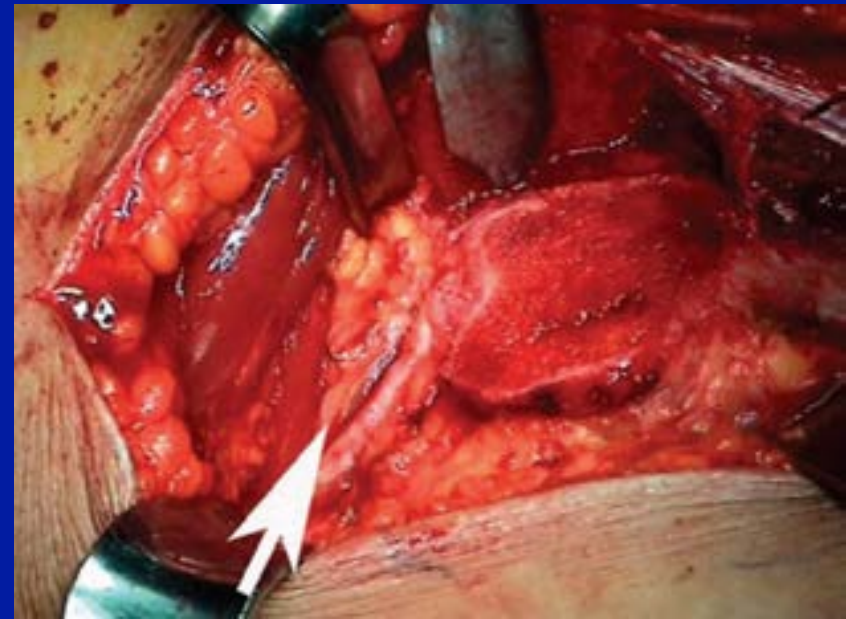
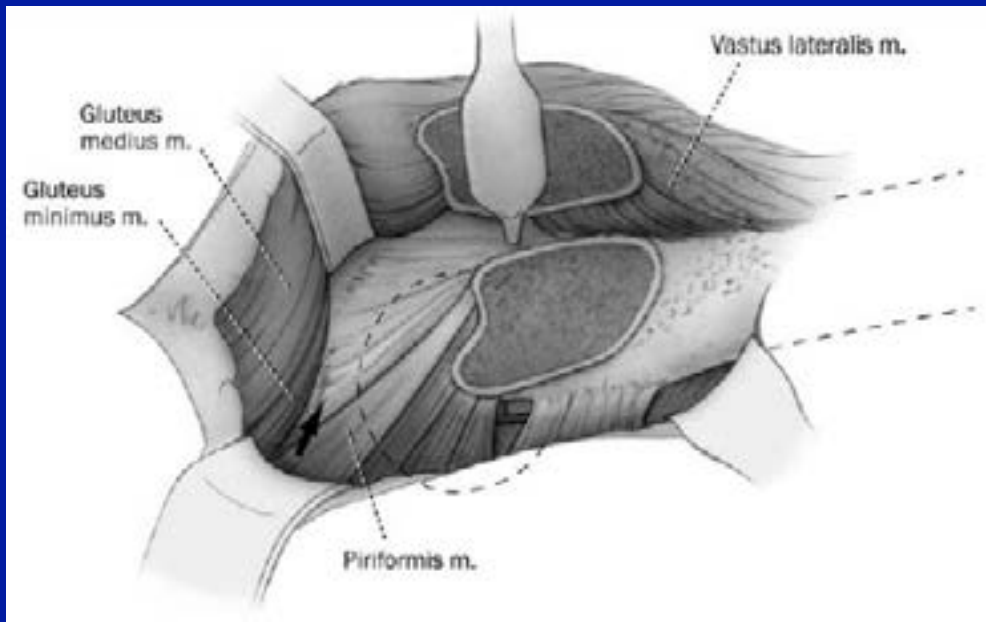
Treatment of femoro-acetabular impingement: preliminary results of labral re-fixation. Surgical technique. N. Espinosa, M. Beck, DA. Rothenfluh, R. Ganz, M. Leunig. JBJS Am 2007; 89:36-53

LUSSAZIONE CHIRURGICA DELL'ANCA



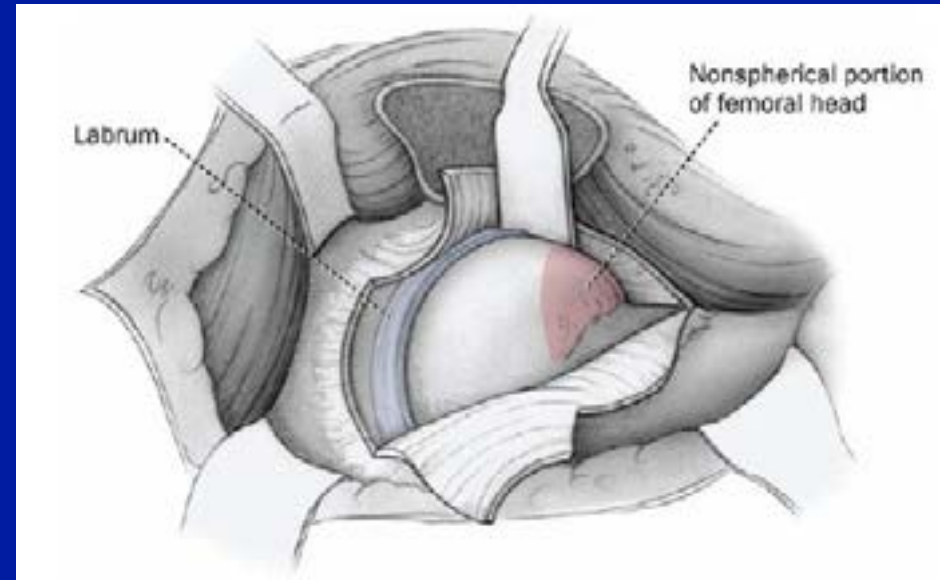
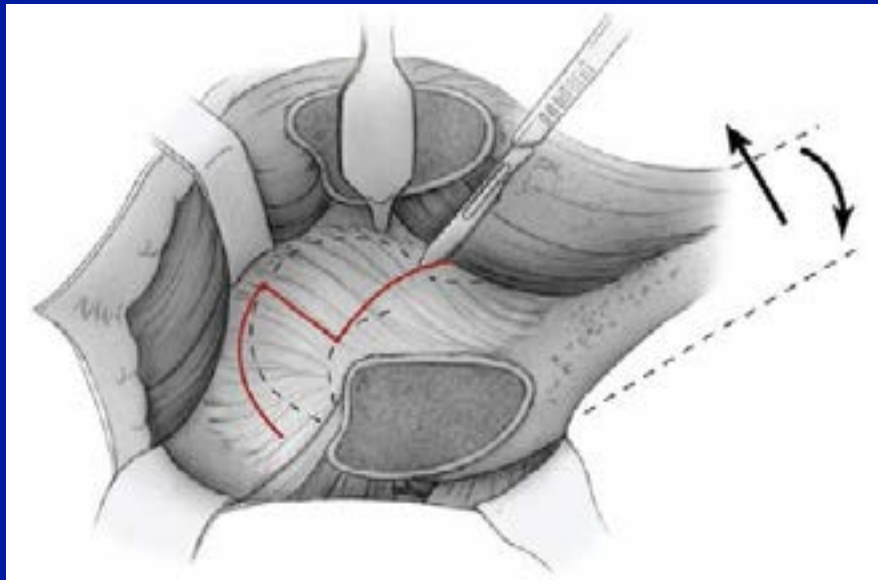
Treatment of femoro-acetabular impingement: preliminary results of labral refixation. Surgical technique. N. Espinosa, M. Beck, DA. Rothenfluh, R. Ganz, M. Leunig. JBJS Am 2007; 89:36-53

LUSSAZIONE CHIRURGICA DELL'ANCA



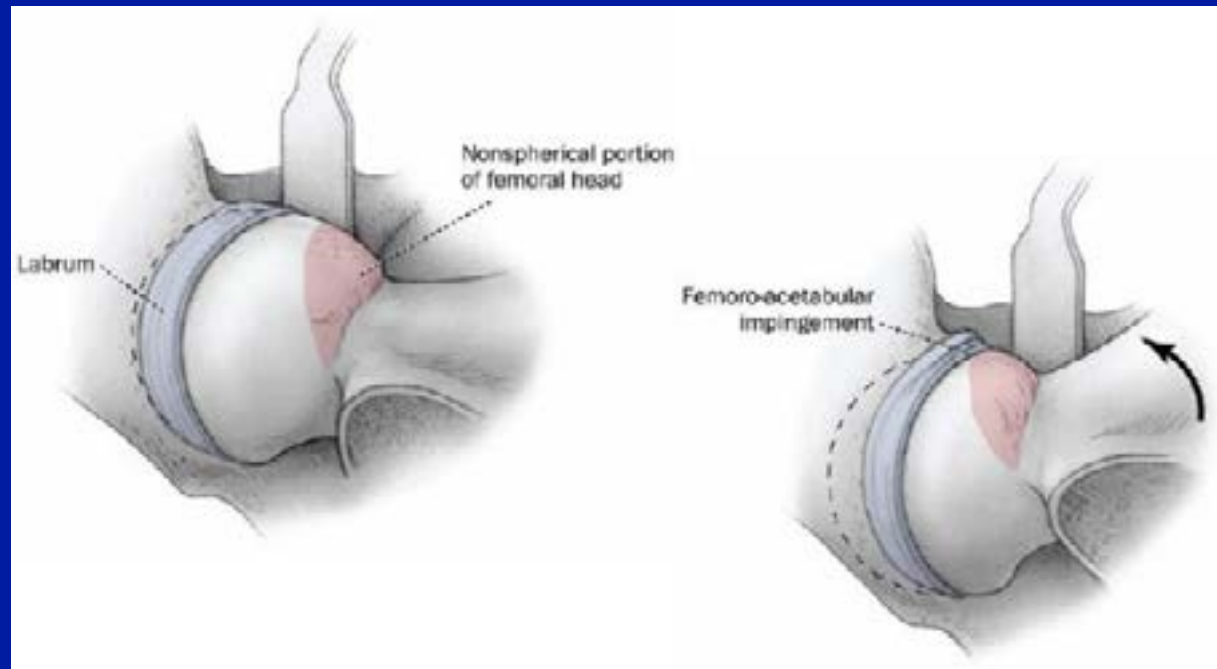
Treatment of femoro-acetabular impingement: preliminary results of labral refixation. Surgical technique. N. Espinosa, M. Beck, DA. Rothenfluh, R. Ganz, M. Leunig. JBJS Am 2007; 89:36-53

LUSSAZIONE CHIRURGICA DELL'ANCA



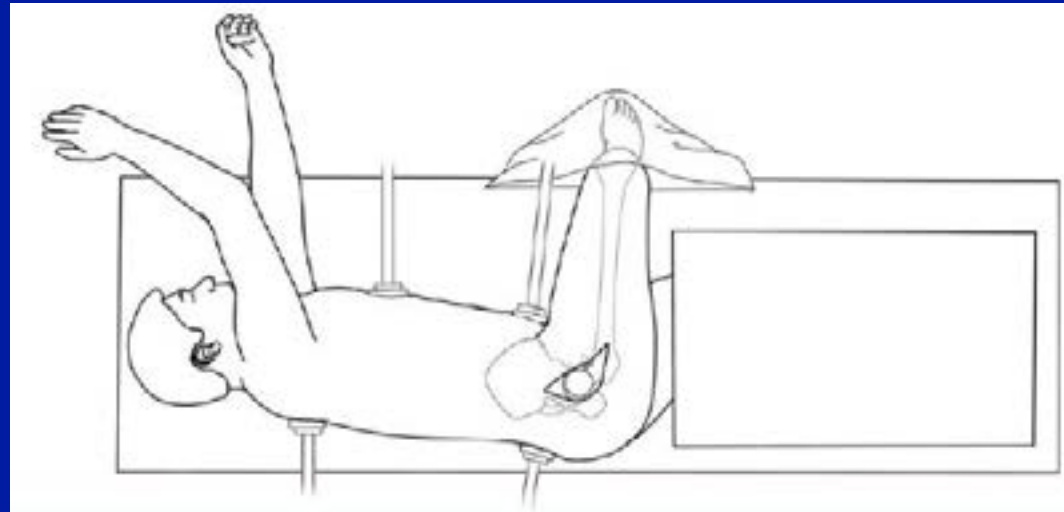
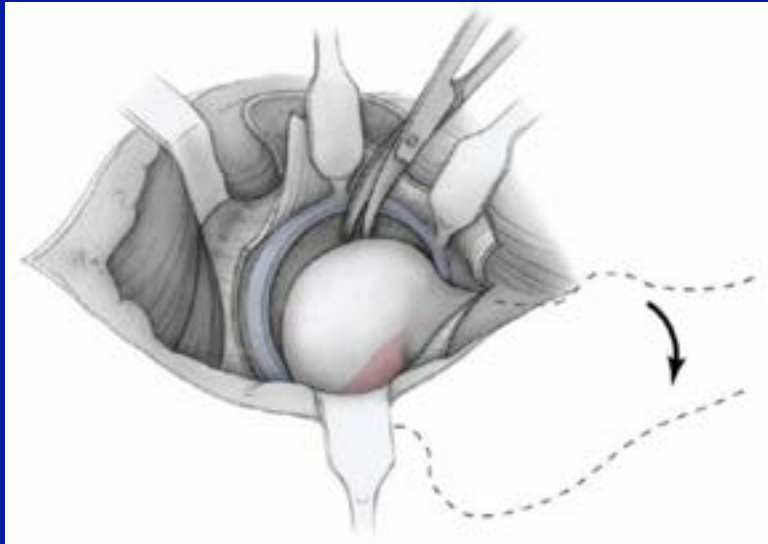
Treatment of femoro-acetabular impingement: preliminary results of labral refixation. Surgical technique. N. Espinosa, M. Beck, DA. Rothenfluh, R. Ganz, M. Leunig. JBJS Am 2007; 89:36-53

LUSSAZIONE CHIRURGICA DELL'ANCA



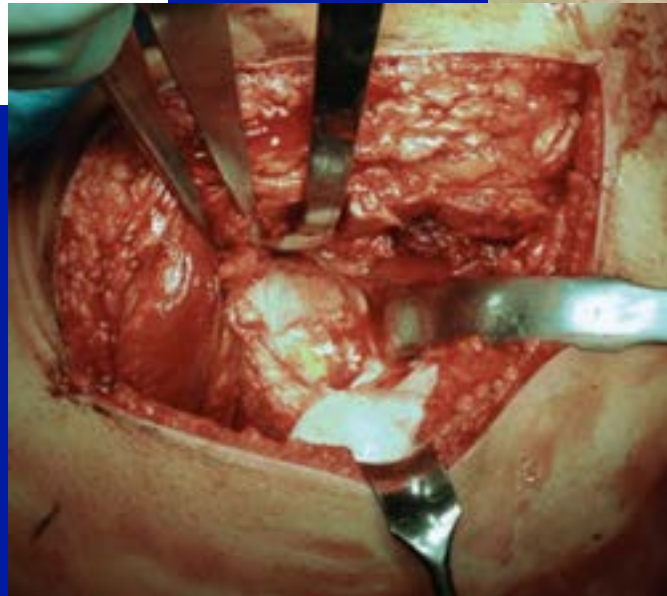
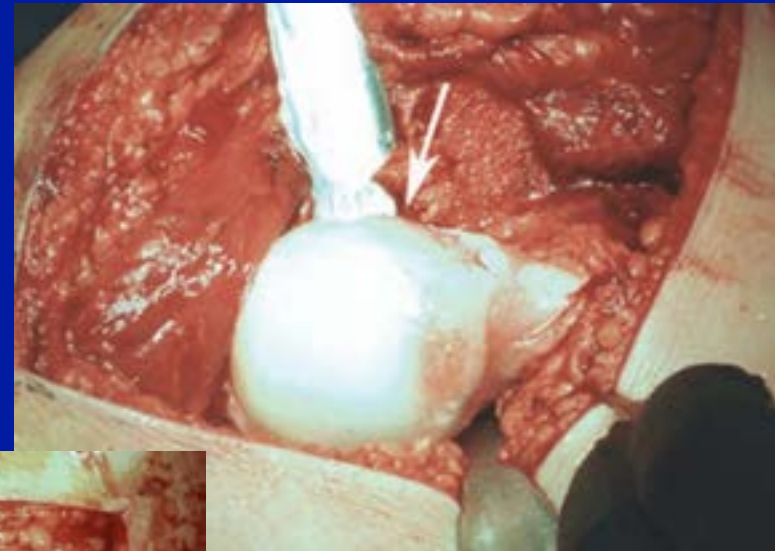
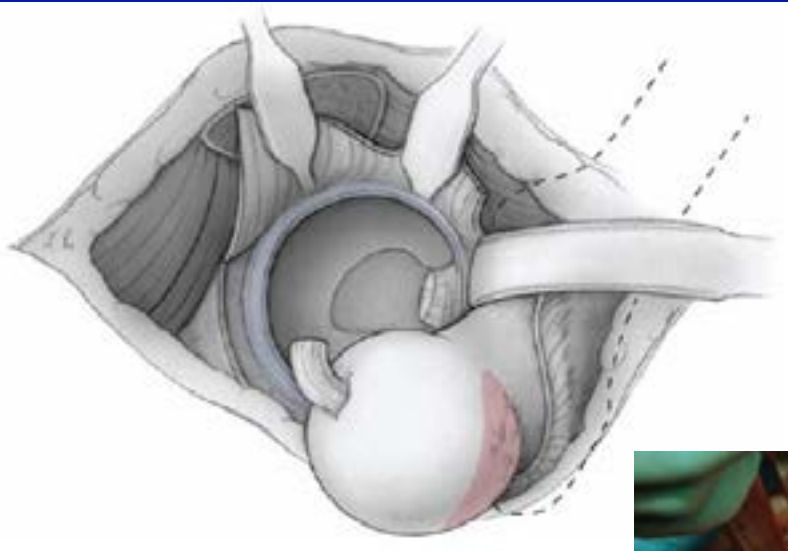
Treatment of femoro-acetabular impingement: preliminary results of labral refixation. Surgical technique. N. Espinosa, M. Beck, DA. Rothenfluh, R. Ganz, M. Leunig. JBJS Am 2007; 89:36-53

LUSSAZIONE CHIRURGICA DELL'ANCA



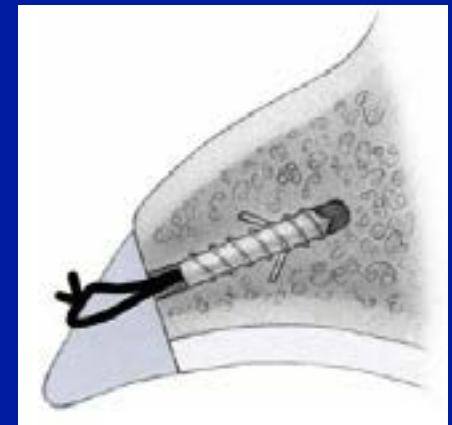
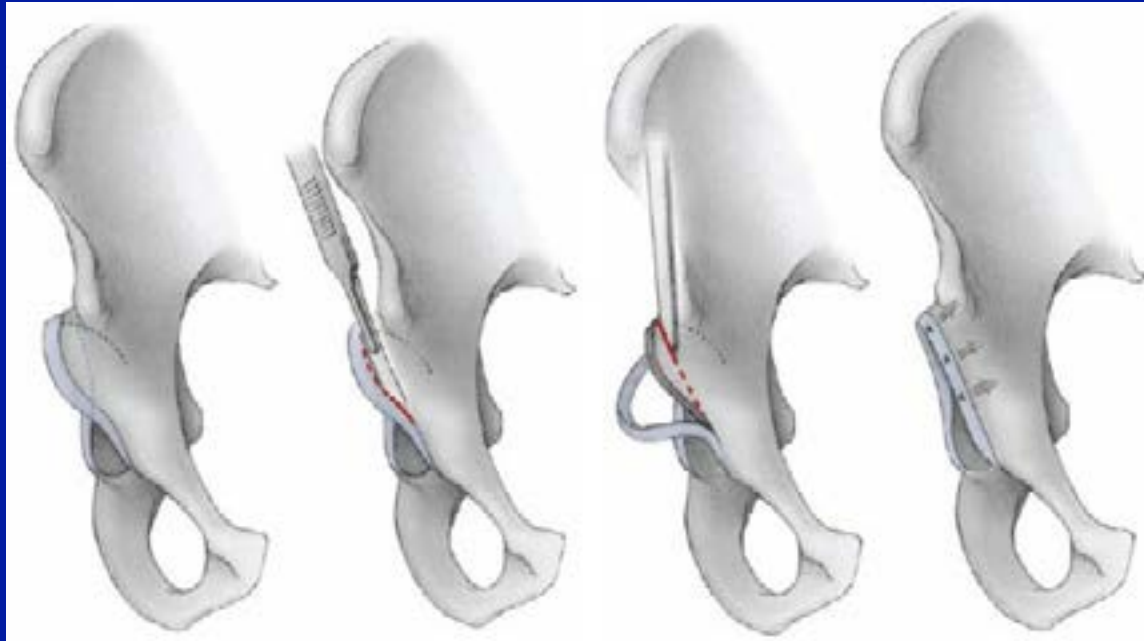
Treatment of femoro-acetabular impingement: preliminary results of labral refixation. Surgical technique. N. Espinosa, M. Beck, DA. Rothenfluh, R. Ganz, M. Leunig. JBJS Am 2007; 89:36-53

LUSSAZIONE CHIRURGICA DELL'ANCA



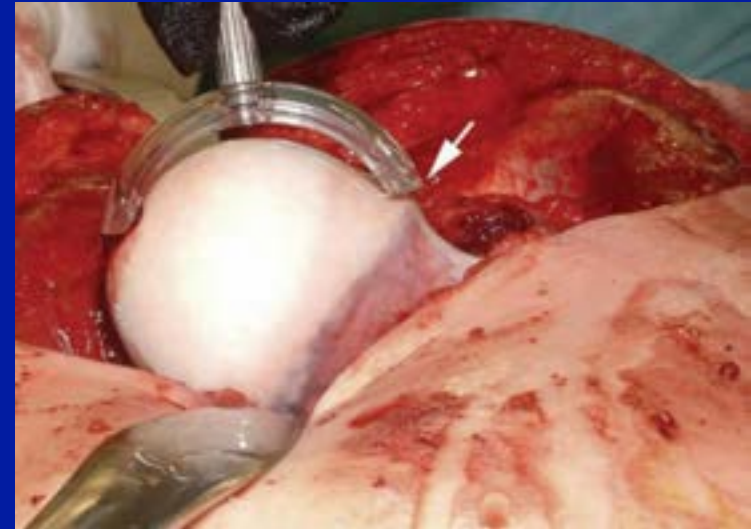
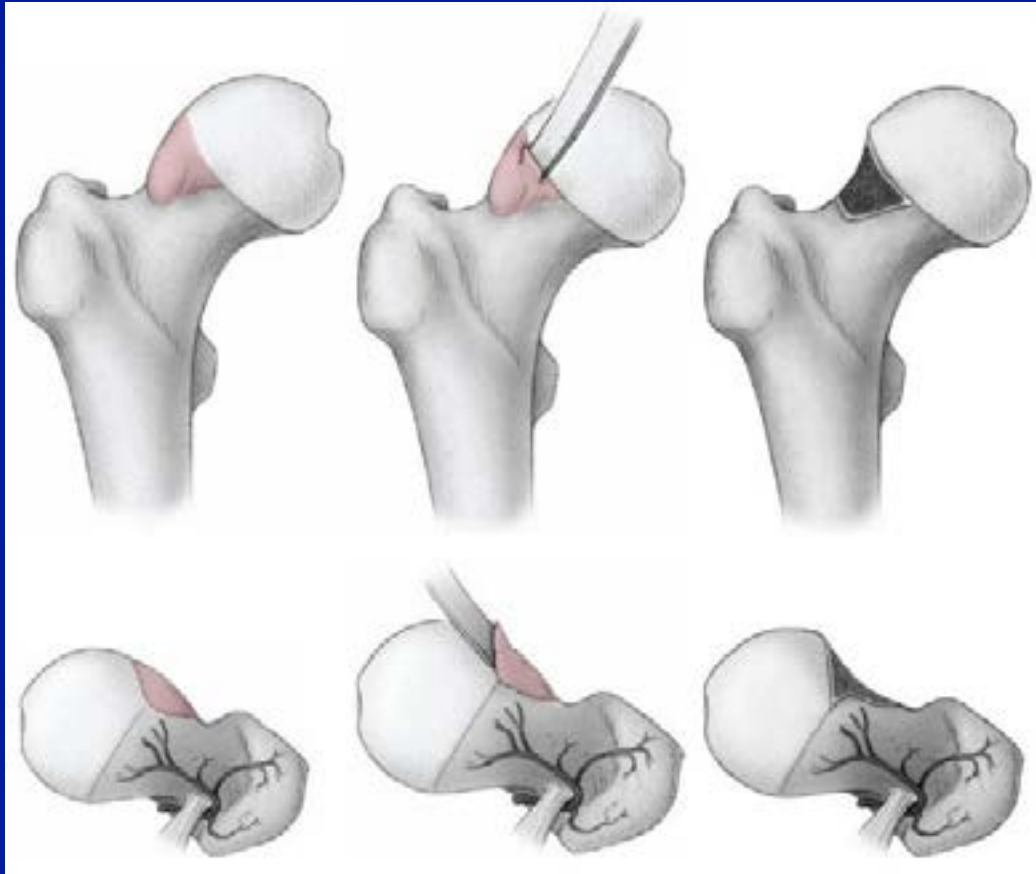
Treatment of femoro-acetabular impingement: preliminary results of labral refixation. Surgical technique. N. Espinosa, M. Beck, DA. Rothenfluh, R. Ganz, M. Leunig. JBJS Am 2007; 89:36-53

LUSSAZIONE CHIRURGICA DELL'ANCA



Treatment of femoro-acetabular impingement: preliminary results of labral refixation. Surgical technique. N. Espinosa, M. Beck, DA. Rothenfluh, R. Ganz, M. Leunig. JBJS Am 2007; 89:36-53

LUSSAZIONE CHIRURGICA DELL'ANCA



Treatment of femoro-acetabular impingement: preliminary results of labral refixation. Surgical technique. N. Espinosa, M. Beck, DA. Rothenfluh, R. Ganz, M. Leunig. JBJS Am 2007; 89:36-53